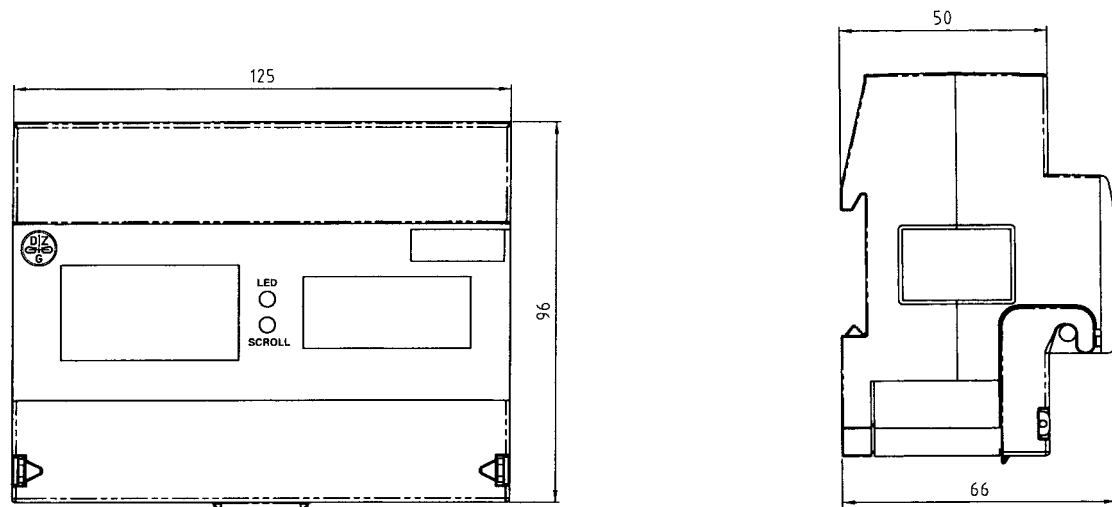


# H31 Series electronic kWh meter for DIN rail mounting



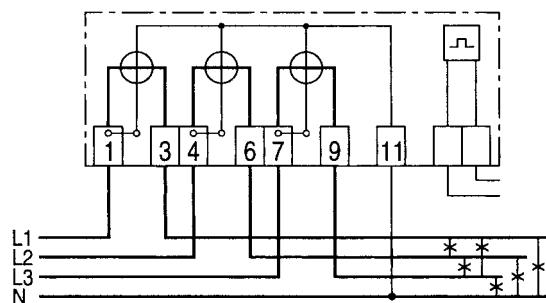
Deutsche Zählergesellschaft mbH

## Case dimensions

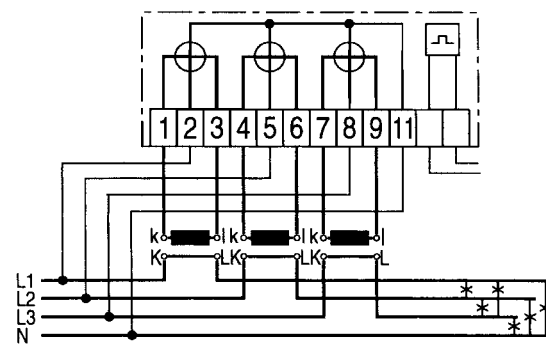


## Connection diagram

• meter for direct connection



• transformer-operated meter



## Manufacturer / Contact



**Deutsche Zählergesellschaft mbH**

Michael-Welte-Straße 5-39 · 78147 Vöhrenbach  
 Telefon +49 (0)7727 9263-0 · Fax +49 (0)7727 9263-99

**Vertriebsbüro**

Mörkenstraße 12 · 22767 Hamburg  
 Telefon +49 (0)40 2 26 52-0 · Fax +49 (0)40 2 26 52-199

2.05.02



**H31 SERIES  
 ELECTRONIC kWh METER  
 for DIN rail mounting**

## H31 Series electronic kWh meter for DIN rail mounting

### Areas of use

Wherever for business accounting purposes energy costs have to be established and accounted for at each point of consumption or connection.

For your cost centre documentation, e.g.

- in mechanical engineering
- in workshops
- in training centres
- in hospitals
- at electricity recharging points

Available for certain markets with official verification, e.g. for use

- in domestic metering
- on building sites
- exhibitions
- shopping centres
- camping grounds

### Advantages

- compliant with IEC 1036
- fulfils CE-requirements
- available with official verification (certain markets only)
- PTB type approval
- for mounting on DIN rail (DIN-EN 50022)
- for 3-wire and 4-wire connection
- multi-function LCD display
- for transformer and direct connection
- transformer ratio can be set from a fixed list (for transformer-operated meters)
- to facilitate integration into existing systems, the meter can be supplied with an optional pulse interface to DIN-EN 62053-31 (includes S0 specification)

### Version of the H31 Series

1	2	3	4	5	6	Version
-						for direct connection
M						for transformer-operation
	D					three phase
		D				three-wire meter
			V			four-wire meter
				H		case for DIN rail mounting
					31	31 Series
					06	nominal load 600 %
					12	nominal load 1200 %
					13	nominal load 1300 %



## H31 Series electronic kWh meter for DIN rail mounting

### Technical Data

#### Measurement of:

- positive active energy (+ A)

#### Class accuracy:

- meters for direct connection:
  - class 2 to IEC 1036
- transformer-operated meters:
  - class 1 to IEC 1036

#### Nominal voltage:

- 4-wire meters:
  - 3 x 230/400 V
- 3-wire meters:
  - 3 x 230 V
  - 3 x 400 V

#### Current range:

- meters for direct connection:
  - 5(65)A, 5(60)A
  - 10(60)A
- transformer-operated meters:
  - 5||1 A
  - 1(6)A

#### Nominal frequency:

- 50 Hz
- 60 Hz

#### Power supply:

- 3-phase, the meter remains operative even when up to 2 phases fail.

#### Meter constants:

- LED
  - 1000 imp/kWh (meters for direct connection)
  - 10000 imp/kWh (transformer-operated meters)
- Pulse output
  - 100 or 500 imp/kWh (meters for directconnection)
  - 1000 or 5000 imp/kWh (transformer operated meters)

#### Outputs:

- optional pulse output to DIN-EN 62053-31 (class A and class B), also usable as a potential-free contact up to 230 V AC / 100 mA.

#### Terminals:

- Current terminals:
  - for conductors of up to 25 mm<sup>2</sup> (meters for directconnection)
  - for conductors of up to 10 mm<sup>2</sup> (transformer-operated meters)
- Voltage/auxiliary terminals:
  - for conductors of up to 2.5 mm<sup>2</sup>

#### Weight:

- approx. 0.5 kg

#### Protection class:

- case: IP51
- terminal block with terminal cover: IP20

#### Operational temperature range:

- -20°C ... +55°C

#### Storage temperature range:

- -25°C ... +70°C

#### Internal consumption:

- per current circuit: ≤ 1.0 VA
- per voltage circuit: ≤ 1.5 VA

#### Dimensions:

- height: 96 mm
- width: 125 mm (7 DIN modules)
- depth: 66 mm

#### Mounting:

- on DIN rail to DIN 50022

#### User controls:

- optical light sensor for display switching/display check
- optional: mechanical switch to set the transformer ratio (only transformer-operated meters)

#### Display:

- 7-segment LC display with symbols

#### Setting function:

- optional: transformer ratios settable